

Bed Driven Vibratory Conveyor

The oldest of Key's [Smart Shaker®](#) technologies, the [Bed Driven style](#) is used for heavier applications where higher displacement is required. Satisfying a wide variety of purposes in the food and bulk products processing industries this vibrating conveyor with stainless steel pan is one of the most sanitary methods of transporting products.

Specific Features

- Custom designed conveyors and systems to handle specific applications and capacities
- Options available to address almost any application
- Expertise unrivaled by any other conveyor manufacturer
- Applications engineers and facilities to assist with testing, system layout, and systems engineering

Drive Options

- Vibratory motor drives—dual vibratory electric motor drives attach to the bed and generate the system drive force
- The [Iso-Drive®](#) mounts to the bed and provides the linear vibrating force for the system



Optional Features

- [Slide gates](#)—manual or pneumatic
- Product diverters
- Removable [screens](#)
- Pan-to-frame mounts are available in the following four types:
 - Shaker arms
 - Coil springs
 - Rubber isolators
 - Rosta mount

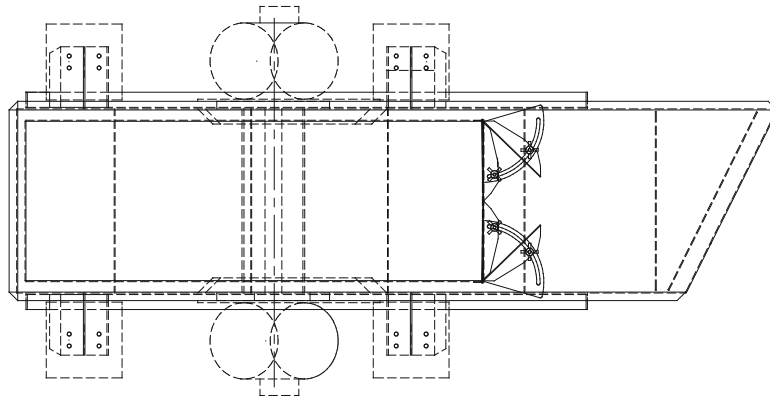
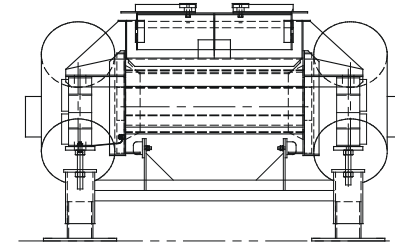
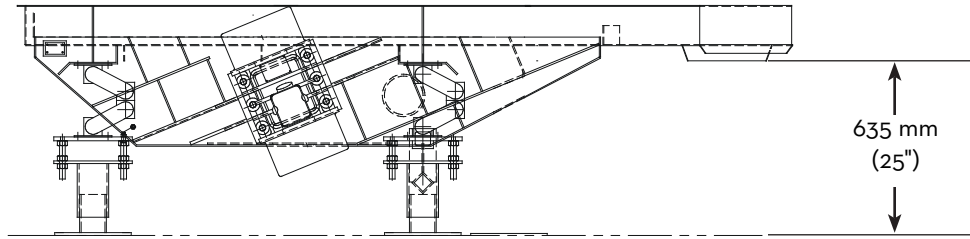


Key Technology

150 Avery Street • Walla Walla, WA 99362 • USA

Phone: 509.529.2161 • Fax: 509.527.1331 • product.info@key.net • www.key.net





*Call Key to find out about
how your products may
benefit from this technology
or another system.*